

M&M Manufacturing

Delivering Spiral Pipe Solutions



Over A Half Century of
Quality Sheet Metal Products!



Round Spiral and Flat Oval Pipe
and Fittings for Commercial and
Industrial Applications



FORT WORTH • DALLAS • HOUSTON
M&M Manufacturing Company

Oval Duct and Fittings



Oval Duct can be lined or unlined, single or double wall. It can be fabricated from the same options of material and gauges as the round spiral pipe.

Oval Fittings can be fabricated from the same options of material and gauges as round spiral pipe.

Advantages of Flat-oval versus Rectangular duct:

- Better air flow
- Lighter weight
- Easier to install
- Longer length between joints
- Fewer hangers
- Joints easier to seal
- Often requires less space
- Resthetically pleasing
- Fewer or no joints

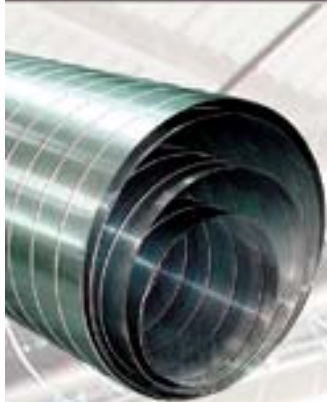
MINOR AXIS	MAJOR AXIS		FLAT SPAN	
	MINIMUM	MAXIMUM	MINIMUM	MAXIMUM
8	17.7	58.9	9.7	50.9
10	18.2	57.7	8.2	47.7
12	18.6	56.6	6.6	44.6
14	20.6	87.1	6.6	73.1
16	21.1	89.1	5.1	73.1
18	27.9	91.1	9.9	73.1

Maximum Sheet Thickness .052"

The duct circumference is increased by approx. 0.7% in the stretching process.

Please contact an M&M
Representative for ordering
information!

Single and Double-Wall Round Spiral Pipe



Standard Single Wall Spiral Pipe is galvanized G90 with lockseams in 10' lengths.

Standard Diameters:
· 3" through 16" in 1" increments
· 18" through 54" in 2" increments

Optional:
· 50" to 100" Diameter

Please contact an M&M Representative for ordering information!

Material Options for all M&M Fabricated Pipe and Fittings

- Various gauges available
- Diameter 3" to 50"
- 304L Stainless Steel
- 316L Stainless Steel
- Aluminum
- Bonderized ("Paint Grip")
- Galvannealed
- PVC Coated
- Single Wall Lined 1" or 1 1/2"
- Double Wall Lined 1" or 2"
 Perforated or Solid Inner Wall
- High Positive/Negative Pressure
- Extra Strength Corrugated




Double Wall Insulated Spiral Pipe with Factory Installed Grille Top option shown.




Manufactured to meet or exceed SPIDA and SMACNA standards.


Spiral Pipe Couplings, Reducers and Tees




Standard Male Couplings are G90 Galvanized sizes 3" to 26". Larger couplings, female couplings and double wall couplings are available for special order.




Van Stone Angle Iron Rings allows the ring to turn for ease of lining up bolt holes. These can be fabricated from black iron, stainless steel, aluminum or electroplate. Angle Iron rings can be tack welded or solid welded on one end or both ends of the pipe.




Reducers are designed to fit the diameter combination needed from 3" to 50". Reducers can be concentric or eccentric.



Spiralmate® Connectors requires no additional sealing and is simple to use. Comes in sizes 10" to 50".



End cap standard sizes are 3" to 26". Other sizes available for special order.



Tees and Crosses are extremely customizable. Choose from straight, bullhead, reducing or conical body styles. Additional branches such as free flow, double and special angle configurations also available.

Spiral Pipe Elbows, Wyes and Taps



90° 5 Gore Elbow

Standard Radius Gored Elbows are available in the same diameters as spiral duct. Radius is $1\frac{1}{2} \times$ Diameter. Slip joint beads are 2" from the ends. Manufactured to 10" positive pressure unless otherwise requested.

Other styles of elbows available in various gauges, gores, radius and configurations.



Die Stamped Flangeless Elbows are continuously stitch welded on the throat and heel from end to end. 3" to 7" are 24 gauge. 8"-12" are 22 gauge.



45° 3 Gore Elbow



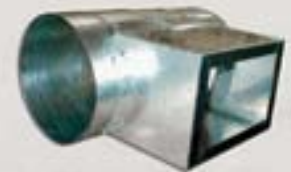
Wyes have straight, reducing or conical bodies. Additional branches, free flow, angle options and pants wyes also available.



Square to Round or Rectangular to Round transitions have either concentric or eccentric offset.



Saddle Taps are Round, Conical Round, Straight, or Free Flow. Can be manufactured at various angles and combinations.



Register Taps are built to order and can be installed at the factory.

Rectangular Duct and Fittings

Rectangular Duct, lined or unlined, manufactured in the industry standard 4' or 5' lengths, in "L" Section or Wrap Around Duct. Choose from a variety of connectors such as row four bolt, S&D, TDCT™ or Ductmate®. Pin spotted insulation duct liner.



Metals and Thickness Options

- Galvanized
- Paint Grip
- Aluminum
- Stainless Steel
- Black Iron
- PVC Coated
- Copper
- 30 Guage through 1/4" plate
- Flat Sheet Service Center

Rectangular Fittings include Transitions such as Square to Round, Plenums, Shoe Tops, and much more! If you can dream it, we can fabricate it!



Additional Products and Services from M&M:

- Roof Curbs, Curb Adapters and Vibration Curbs, Isolation Rails
- Roofing Products such as Chimney Caps and Gables
- Industrial & Food Service Fume Hoods
- Flat Sheets of Metal
- Weld (MIG, TIG, Plasma and Laser)
- Shear, Bend Roll & Punch
- Dual Head Water Jet Cutting and Laser Cutting
- Delivery or "Will-call"
- Estimation and Take Off
- Shop Drawings for BIM projects



www.mmcurbs.com
www.mmmfg.com

200 Adolph St.
Fort Worth, TX 76107
817.334.0034 Ph.
817.336.5247 Fx.

5555 Guhn Rd
Houston, TX 77040
713.460.1677 Ph.
713.460.1687 Fx.

360 S. Shiloh Road
Garland, TX 75042
972.485.1504 Ph.
972.485.1314 Fx.